



CalTrans Mini and Modular Roundabouts Webinar

Vortex Modular Roundabouts

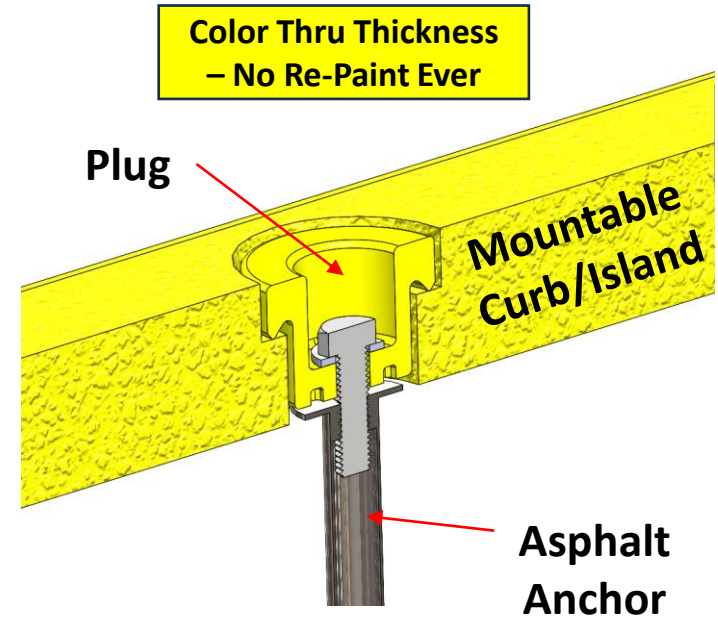
Adam Lanik, VP

E: alanik@vortex-roundabouts.com

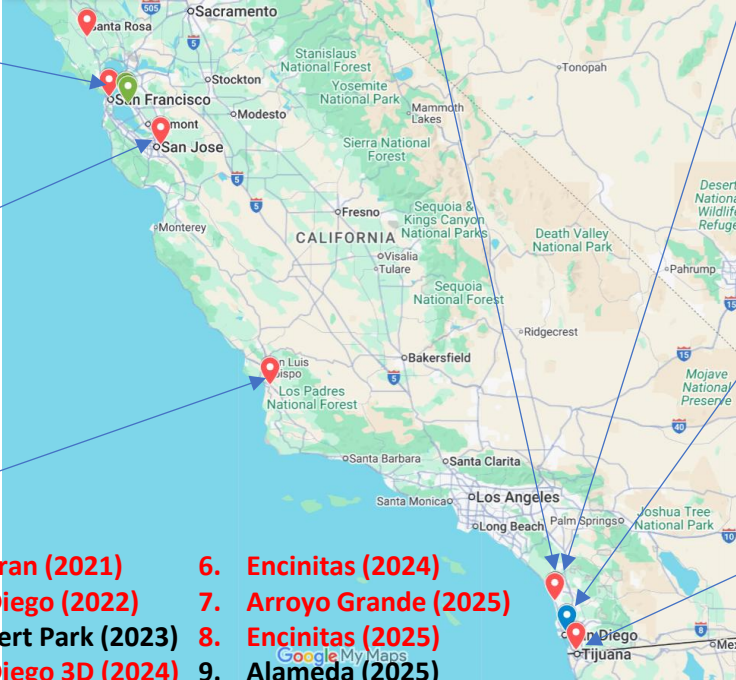
Modular System

Basic Elements

1. Solid Plastic Mountable Curb/Island
2. Asphalt Anchor
3. Impact-Absorbing Plug



CA Installations



1. San Fran (2021)
2. San Diego (2022)
3. Rohnert Park (2023)
4. San Diego 3D (2024)
5. San Jose (2024)
6. Encinitas (2024)
7. Arroyo Grande (2025)
8. Encinitas (2025)
9. Alameda (2025)
10. Alameda (PO, 2026)

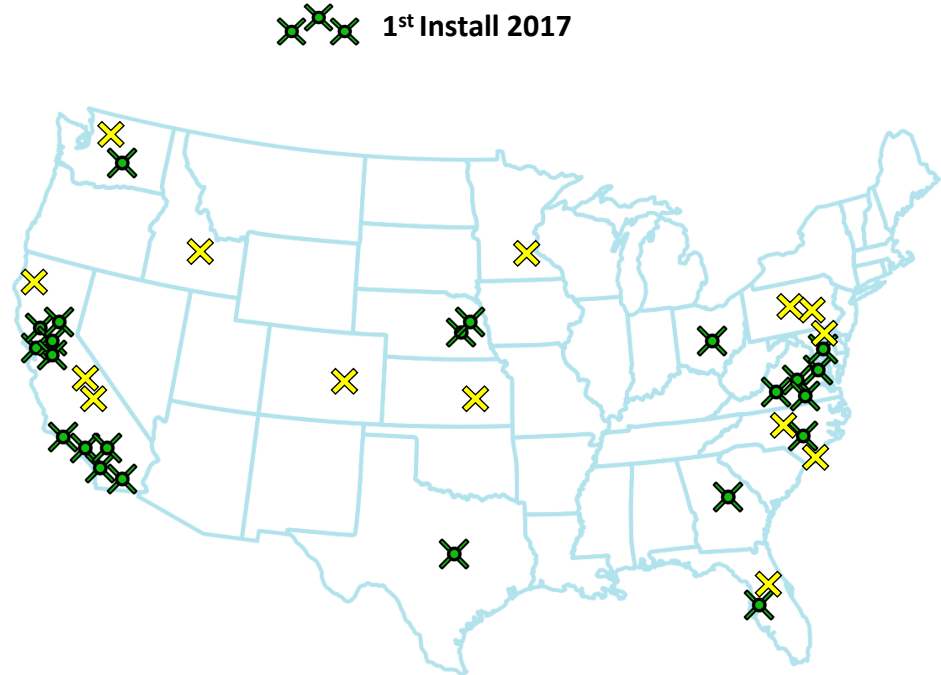


Where and What's Coming

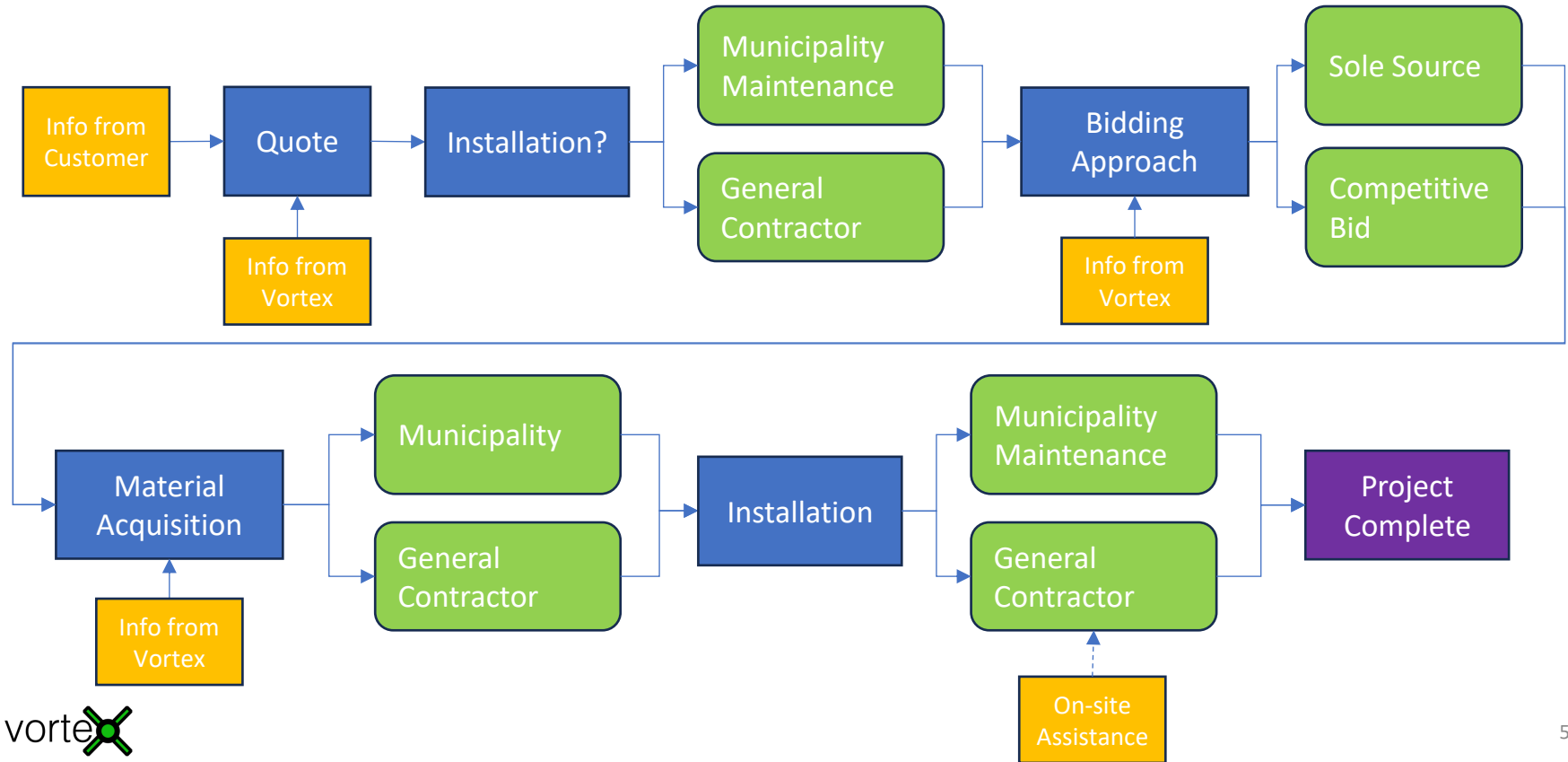


Installation Locations

- Current → 9 States
 - CA (9)
 - VA (7)
 - NE, MD (2)
 - FL, NC, OH, TX, WA (1)
 - 28 total installations
- Upcoming → CA, FL, KS, PA, CO, ID, MN
 - 5 new states



Procurement Process

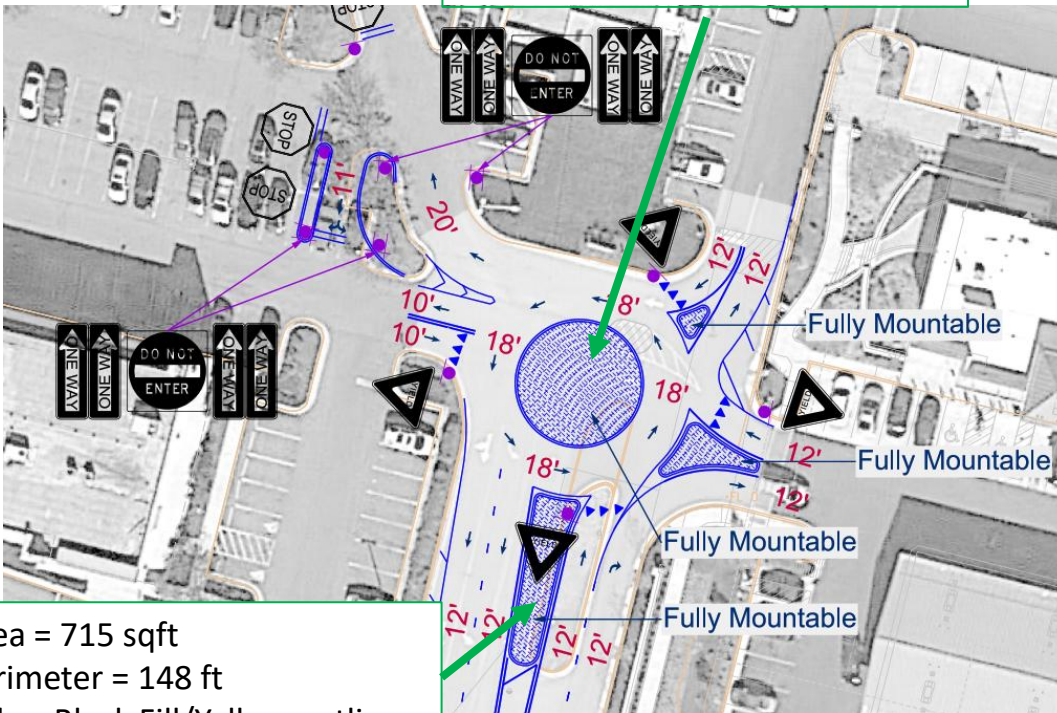


Quote - Input Info

Quoting Needs

- Need Per Island
 - Total Area
 - Total Perimeter
 - Color
- Color Options
 - Nearly any color
 - Black, yellow, gray most common

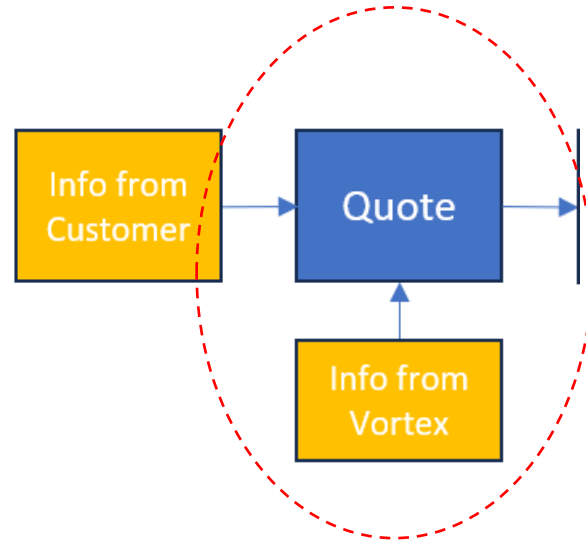
Area = 1590 sqft
Perimeter = 141 ft
Color: Black Fill/Yellow outline



Area = 715 sqft
Perimeter = 148 ft
Color: Black Fill/Yellow outline

Quote Info From Vortex to Customer

1. Budgetary or Formal Quote
2. Installation Instructions
3. Product Spec Sheet
4. Installation Estimate
 - a. Estimated labor hours
 - b. Estimated duration (1-15 days)



Bid Process

Sole Source

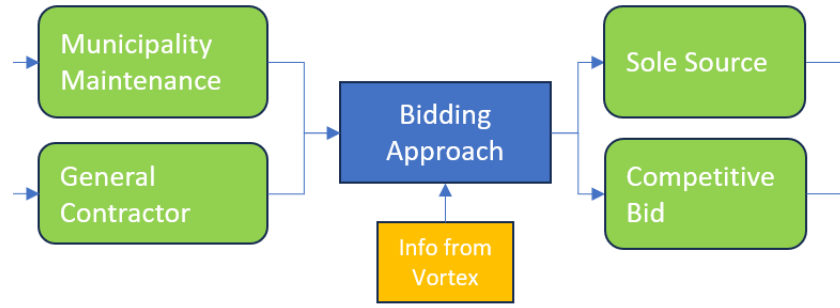
- Typical if Muni is
 - Buying
 - Installing
- Vortex Provides
 - Formal Quote
 - Sole Source letter

Competitive bid

- Typical if GC is
 - Buying
 - Installing
- Vortex Provides
 - Formal Quote (before or after letting)
 - Installation instructions/Spec sheet to GC's
 - Request for Info (RFI) from GC's

Other Info

- Piggyback existing contracts



Material Acquisition

Typically Mirrors Installer:

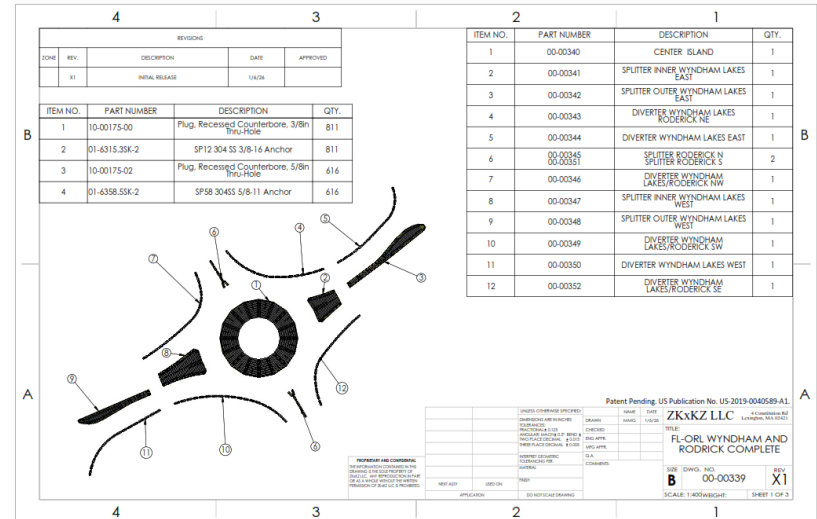
- Muni installs → Muni acquires
- GC installs → GC acquires

Steps:

1. Final drawing submitted to Vortex
2. Vortex provides modularized drawing package
<Approval>
3. Vortex begins Manufacture
4. Vortex ships materials to site

Duration:

- Drawings/CAD = 1 – 2 Weeks
- Manufacture = 4 – 8 Weeks
- Deliver = 1 – 3 days



Installation

Installer Selection:

- Typically lowest bidder

Pre-Con and Training:

- Vortex can assist with pre-con meeting
- Vortex to provide detailed instructions (written and video)
- Vortex to provide site specific drawing
- Vortex offers on-site installation assistance
 - Typically 1-2 days

Duration = 1 – 15 Days

- Size of roundabout (sqft)
- Size of crew



Questions

Adam Lanik - Vortex

alanik@vortex-roundabouts.com

www.vortex-roundabouts.com

C: 619-247-1524



Bel Air, MD



Moses Lake, WA